



SYSPRO™

Simplifying
your Success



SYSPRO 6.0 SP2
June 2008

Introducing SYSPRO

SYSPRO is an internationally-recognized, leading provider of enterprise business solutions. Formed in 1978, SYSPRO was one of the first software vendors to develop an enterprise resource planning (ERP) solution. Today, SYSPRO is a global business solutions vendor, represented on six continents and over 1500 channel and support partners. Over 14,000 licensed companies across a broad spectrum of industries in more than 60 countries trust SYSPRO as the platform on which to manage their business processes.

Customer focus is a core component of SYSPRO’s corporate culture and is one of the key reasons why SYSPRO maintains a strong leadership position in the enterprise application market. By focusing on people and building lasting relationships with customers and partners, SYSPRO consistently excels at guiding customers through all aspects of their implementation. The aim is to deliver world-class software that gives customers the control, insight and agility they need for a competitive advantage in a global economy. As such SYSPRO’s solutions provide a unique combination of robust and scalable yet current technologies that provide near-zero risk and high return on investment.

SYSPRO is continually developing remarkable software that simplifies operational effectiveness and keeps customers in control of their businesses. Our vision is focused on delivering customer needs today and in the future.



Service Pack 2 within SYSPRO

Service Pack 2 (SP2) release for SYSPRO 6.0 continues with SYSPRO's published goal of making its software easy to use, easy to deploy and easy to maintain.

This Service Pack contains new functionality as well as further enhancements to the user interface, ongoing additions to electronic signatures, and SRS reports to extend the already full featured SYSPRO 6.0 product.

Families and Groupings is a new module that has been released with SP2.

User Interface and Customization

User Interface

The default font used throughout SYSPRO for captions, labels and listviews is now Tahoma (previously this was MS Sans Serif).

The default theme for the user interface is now Microsoft Office 2007 (previously Microsoft Office 2003).

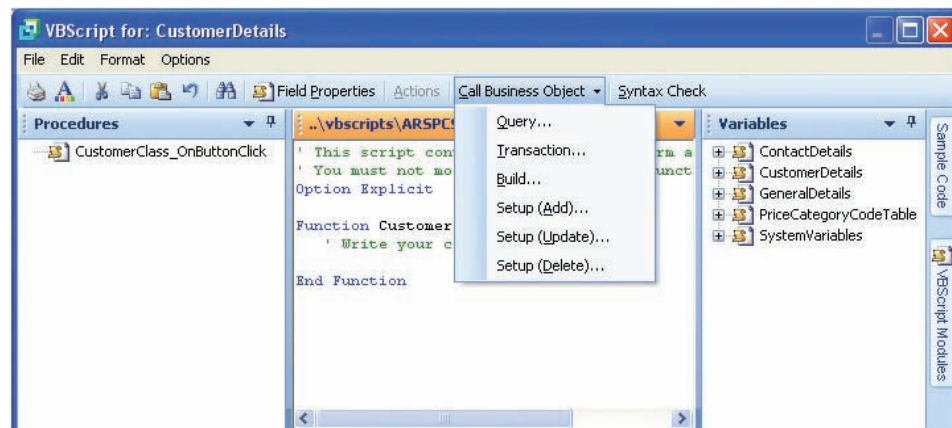
The customization facilities introduced with SP1 (e.g. new toolbars, advanced listviews, docking panes, grid editing controls and display and entry forms) have been extended to a number of programs in SP2.



VBScripting

The following enhancements to VBScripting within SYSPRO have been implemented:

- Improved method of invoking business objects in a VBScript
- VBScripts can be deployed at the role level
- Code in a VBScript can be reused across scripts using VBScript modules
- VBScript timeout option for scripts that take some time to execute
- Syntax checker built into the VBScript editor
- Restriction of VBScript size has been removed
- New event **OnLinkClicked** has been added to forms



Customized Panes

Customized panes allow you to create your own executive views in SYSPRO using various graphical components such as graphs, list views and web-based applications (such as Crystal Xcelsius charts). These views can be defined using built-in templates or constructed as required using VBScripting.

A high level of interaction is achievable between customized panes and the standard SYSPRO product enabling you to customize the SYSPRO User Interface to exacting requirements.

You can also automate a customized pane to refresh itself after a specified period of time. This, coupled with the ability to create desktop alerts (popup windows), enables you to deliver dynamic data alerts to anyone in the organization.



SYSPRO Office Integration

SYSPRO's Office Integration functionality has been bolstered by extended search capabilities that includes the facility to search a number of key fields within SYSPRO.

These include:

- Suppliers: by supplier, name or short name
- Customers: by customer, name or short name
- Bank Query: by bank or description
- Ledger accounts: by ledger code or description
- Contact Management: by full name, first name or last name
- Inventory: by stock code, description or long description
- Bill of Materials Costing Query: by stock code, description or long description
- Quotation: by quotation number, description, customer or customer name
- Work in Progress Jobs: by job or description

A search designer function has been added that enables you to construct your own search parameters by company, operator or role. You can also decide how you want your searches to be displayed i.e. pane or listview and what fields you want to display.

You can now connect to the SYSPRO database in a client/server environment as an alternative to using web services, which will contribute to improved performance. As a result of the client/server connection SYSPRO Office Integration is now also supported on UNIX application servers.

The method of extracting data from different companies is now a seamless and easy process and SYSPRO charts can also be retrieved and inserted into Microsoft Office documents.

Enterprise Reporting

SYSPRO Analytics

The architecture of SYSPRO Analytics has been revised to simplify its installation and configuration. Part of this requires that the SYSPRO Analytics installation is closely linked to a regular SYSPRO Client installation. This allows you to seamlessly invoke SYSPRO Analytics components from within SYSPRO.

In addition, because the new SYSPRO Analytics configuration is stored in a master database, roaming user configuration and other benefits (e.g. application self-healing, security, etc.) are available.

The user interface has been revised to take advantage of latest technology and to more closely match the user interface of the Core SYSPRO product. Improvements to the viewer user interface include:

- the use of docking panes to maximize the use of screen real estate
- the facility to connect to and view information contained in Analysis Services 2005
- the facility to build your own KPI/Metrics
- simpler deployment of Analytics Books

SYSPRO Analytics has been changed to use the same language translation and customization technology as the core product. This means that you can use the product in a foreign language and/or customize terminology to more closely suit end-user terminology or jargon.

SYSPRO Reporting Services

A host of new reports have been added to the SYSPRO Reporting Services menu.

The archive view of reports is in the new list view style, thus providing for different views and searches on archived reports.

Report Writer

You can export table definitions from the Report Writer Data Dictionary and import these definitions later or at another SYSPRO site.

This is especially useful when you have customized the standard data dictionary definitions or defined your own tables and wish them to be used at another SYSPRO site.

This feature is also useful for support personnel when attempting to duplicate issues with reports when they use custom data definitions.



SYSPRO Financials

Automatic numbering of Suppliers and Customers

SYSPRO can now automatically generate numbers for Suppliers and Customers. The numbering method in the module setup options allow you to choose from Manual, Automatic or Scripted numbering. The scripted option allows you to create a unique code for a Supplier or Customer using VBScripting based on information against the Supplier or Customer, e.g. branch code and a sequential number 10001.

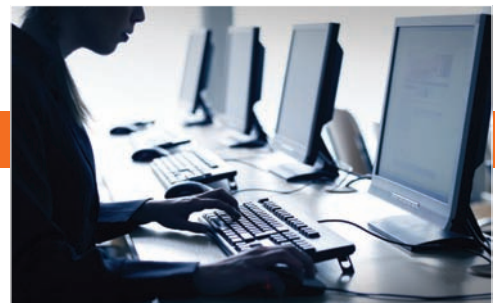
The image displays two screenshots of the SYSPRO software interface. The top screenshot is the 'Accounts Receivable Setup' window, with the 'Numbering' tab selected. It shows options for 'Invoice numbering method' (By branch or By company) and 'Customer numbering method' (Manual, Automatic, or Scripted). The 'Next customer number' is set to 0000001. Below these are fields for 'Next invoice:', 'Next credit note:', and 'Next debit note:' with values 100515, 800056, and 900037 respectively. There are also fields for 'Next discount credit note:' and 'Next discount debit note:' both set to 1. The bottom screenshot is the 'Accounts Payable Setup' window, also with the 'Numbering' tab selected. It shows options for 'Supplier numbering method' (Manual, Automatic, or Scripted) and 'Payment run numbering method' (Manual or Automatic). The 'Next supplier number' is set to 0000001, and the 'Next payment run' is set to 1. Both windows have 'Save' and 'Print' buttons at the bottom.

A/P Payment Cycle

The facility to allow operators to process simultaneous payment transactions in Accounts Payable without locking out other users, was released with SP1 as an optional component.

In SP2, you are automatically converted to the new A/P Payment cycle if you have not yet already converted to this system and there is no payment run currently in progress.

Once converted, you will be unable to run the Legacy Payment Cycle.



Contact Management

You can define your own folders, where attachments will be stored on the server. The default location resides below the Work folder, however, as attachments may consume large areas of disk space you can now configure a user-defined attachment folder location per company to store activity information. Points to note are:

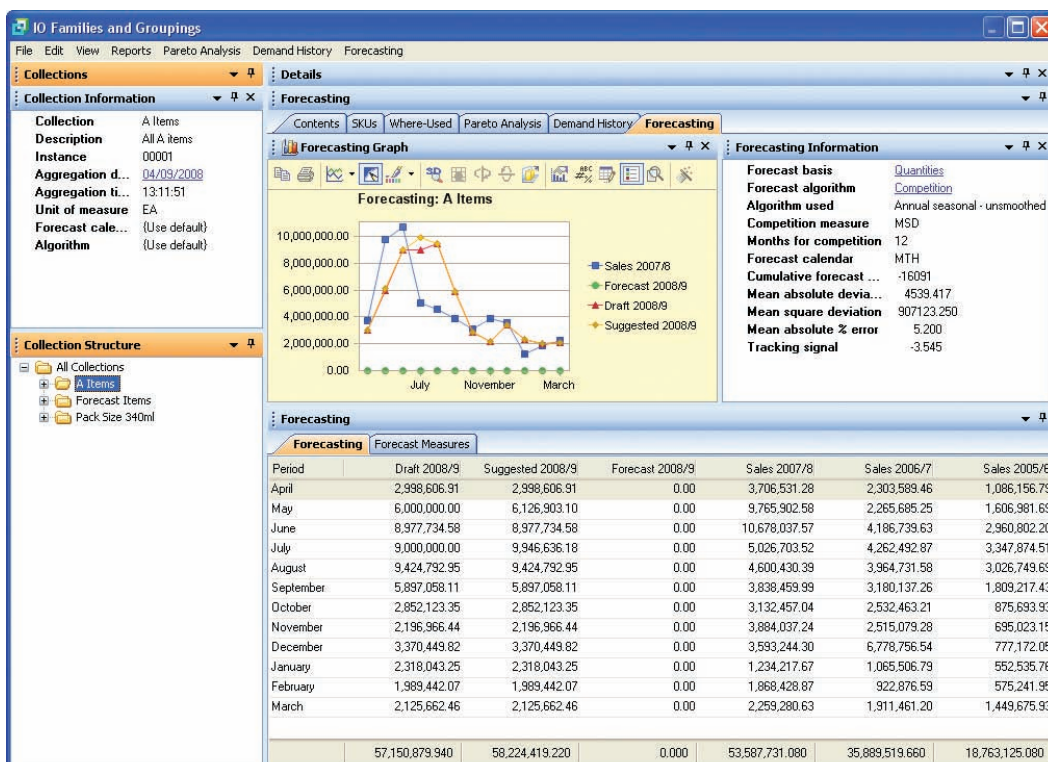
- Previously captured attachments must be moved to the new location.
- The folder location must be unique for each SYSPRO Company. This can be done by using the company id as part of the folder path.

In addition, a new Contact Management copy function enables you to update details against multiple contacts with minimal effort. For example: If a business changes it's telephone number, address or web site address the copy function will assist in updating this information against all its contacts as well..

SYSPRO Distribution

Families and Groupings

The Families and Groupings module provides the means for you to group inventory items in order to analyze and forecast at higher levels. This is achieved by creating 'collections'. Collections are a group or family of stock codes or warehouses to be viewed as a whole and forecast for as a whole.



The need for Families and Groupings arises from a business scenario where due to the number of Stock Codes, or Stock Keeping Units (SKUs), the handling of individual stock items in the Sales Forecasting & Purchasing Process would constitute an unmanageable workload.

A 'Family' may be defined as a collection of SKUs where a hierarchy exists and there is a logical relationship between these SKUs. An example of a family could be Apple Juice which is packed into 300ml, 500ml and 1 liter packs each of which is a separate SKU. Apple Juice would in turn be a member of the Pure Fruit Juice 'Family'. Typically, families can be best observed by examining the Price List of the organization, and is mostly used in the 'Outbound' or Sales view of the SKUs.

A Group is generally a single level collection of SKUs that is used when arranging SKUs for purchasing, storage or internal analysis. The 300ml Plastic Bottle cited in the example above would be a member of the Plastic Packaging Group of SKUs. Typically, groups can be best observed by examining the Logistics view of the organization, and may be used to create Inbound (Supplier), Home or Outbound views of collections of SKUs.

Families and Groupings is therefore essential to an organization and serves as input to Forecasting and MRP in a demand-driven environment.

Counter Sales Deposits

In a bid to streamline the payment process and provide greater management control, you can now record deposits (and partial deposits) separately against an order which can be selected for application during payment and printed in detail on the invoice.

In addition, all payments and deposits can be printed separately on the invoice.



Requisition System

You can now assign a user the authority to carry out specific activities instead of being given a level of activity and automatic assumption of authority for all activities under the level. This functions to provide greater control over the various activities involved in processing a requisition.

In addition, two new values can be assigned to each user:

- A maximum value to be applied to either the whole requisition or the requisition line
- An automatic approval value, which if not exceeded, will result in the requisition being automatically routing to the next user.

Load Planning Reports

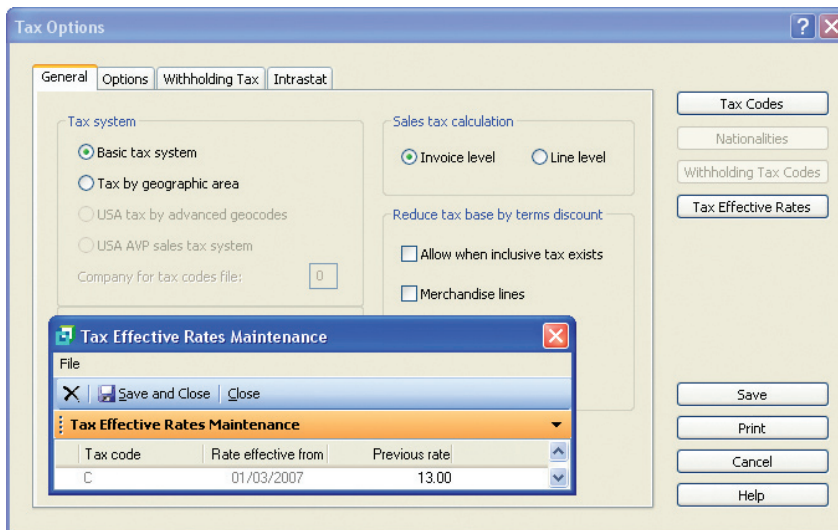
The Load Planning feature is designed to give assistance in determining when orders can be delivered, and in improving the actual picking and loading of goods for subsequent delivery. The following reports are now available:

- Detail Order List
- Picking List and
- Drivers Manifest

Historical VAT/GST Tax Codes

Many countries require their taxpayers to keep from five to seven years of history, and some insist that this is in electronic format.

As sales tax rates change more frequently, the current method of keeping a single historical rate of tax is not sufficient, and the absence of complete information could lead to fines. A method of keeping and using an unlimited number of historical rates has been introduced to overcome this problem.



SYSPRO Manufacturing

SYSPRO Factory Scheduling

SYSPRO Factory Scheduling has been compiled using Preactor 9.4 making it VISTA compliant. The new installs are available with SYSPRO SP2 on a separate SYSPRO Factory Scheduling CD.

The licensing mechanism has also changed and now includes a license site manager which allows you to manage the SYSPRO Factory Scheduling licenses more effectively.

The hotspots grid error has been corrected by Preactor and the fix will be available in the 9.4 compiled release of the SYSPRO Factory Scheduling software.

You can print SFS Scheduled Job dates and times on Factory Documentation in the heading and operation sections.

Confirming jobs when copying

You can now confirm a job when copying from another job. If reserving parent/component parts OR the component is a floor stock item then the job cannot be confirmed.

General

Monitoring the performance of SYSPRO

You can now monitor the performance of SYSPRO applications and VBScripts running on a user's machine. This is achieved by setting the Diagnostics option under General tab in the System Setup to dev02.

The System Setup dialog box is shown with the General tab selected. Under the 'Options' section, the 'Diagnostics' dropdown menu is set to 'dev02'. Other options include Language (EN), Nationality (USA), and Site (empty). Under 'License setup', the number of licensed users is 16, and the number of Report Designer seats is 1. Under 'SYSPRO login options', 'Use network user name' is selected, and 'Allow operator override' is checked.

The Events and Messages window displays a list of events. The 'Filter program' dropdown is open, showing a list of options to filter the events.

Event	Posted by	Posted to/Message	Event description	Time
60100	IMPMENLZ	SYSPRO - The OUTDOORS Comp...	Pane now visible	09:29:17:84
Callout	IMPMENLX	"PANES-COUNT"		09:29:18:58
Callout	IMPMENLX	"NEW-PANE"		09:29:18:65
60013	IMPMENLX		Shift+F3	09:29:18:65
RETC	IMPMEN	"S-F3"		09:29:18:69
Callout	IMPFR9L2	"CREATE-PANES"		09:29:19:20
Callout	IMPFR9L2	"FIX-PANE-SIZE"		09:29:19:31
RETC	IMPFR9	"GET-PANES"		09:29:19:59
Callout	IMPFR9L1	"POPULATE"		09:29:19:61
RETC	IMPFR9	"GET-LISTS"		09:29:19:65
Callout	IMPFR9L2	"CLEAR-AND-POPULATE"		09:29:19:87
Callout	IMPFR9L2	"SET-LIST-ITEM-STATE"		09:29:19:92
60101	IMPFR9L2	Customized Pane Editor	Pane gained focus	09:29:19:92
RETC	IMPFR9	"GET-TEMPS"		09:29:19:94
Callout	IMPFR9LV	"CLEAR-AND-POPULATE"		09:29:20:26
Callout	IMPFR9LV	"SET-LIST-ITEM-STATE"		09:29:20:31
Callout	IMPFR9LV	Customized Pane Editor	Pane gained focus	09:29:23:70
Callout	IMPFR9LV	Customized Pane Editor	Pane gained focus	09:29:27:56

- Options
- Filter program:
- Show Listview Events
- Show Docking Pane Events
- Show Toolbar Events
- Show Form Events
- Show CALLOUT messages
- Show RETC message
- Show VBScripts invoked



Database changes

There are only minor database changes when upgrading to SP2. You will be able to upgrade to SP2 from Issue 010 and Issue 010 SP1.

A client installation is not required to upgrade to SP2, as SP2 can be installed on the application server and programs/screens are automatically self-healed to the client.

The only exception to this may be older versions of Windows that do not support registry-free COM or where ActiveX Controls cannot be self-registered on client desktops because of restricted permissions.

Developers should consult the latest Software Development Kit Documentation (SDK.CHM) to view the detailed database changes between versions.



Web Applications

The Web Applications have been upgraded to the .NET 2.0 Framework and are now supported on Windows 2008. A new Web Application has been written to Query Contact Management.

Alternate operator password

The Administrator can set an alternate password per operator.

This feature allows the administrator to authenticate specific transactions using electronic signatures and the alternate operator password.



Africa and the Middle East

SYSPRO (Pty) Limited
Block A
Sunninghill Place
9 Simba Road
Sunninghill
Johannesburg
2191
South Africa
Tel: +27 (0) 11 461 1000
Fax: +27 (0) 11 807 4962
Email: info@za.syspro.com

Asia Pacific

SYSPRO Software Pty Limited
Level 5, 113 Wicks Road
North Ryde (Sydney) NSW 2113
Australia
Tel: +61 (2) 9870 5555
Fax: +61 (2) 9889 5566
Email: info@syspro.com.au
All enquiries:
Australia: 1300 882 311
Singapore toll free: 800 616 2209
Malaysia toll free: 1800 812 655
Indonesia toll free: 0018 0306 121 62

Canada

SYSPRO Software Limited
4400 Dominion Street
Suite 215
Burnaby (Vancouver)
British Columbia
Canada
V5G 4G3
Tel: +1 (604) 451-8889
Fax: +1 (604) 451-8834
Email: info@ca.syspro.com

UK & Europe

K3 Business Technology Group
Baltimore House
50 Kansas Avenue
Salford Quays
Manchester
United Kingdom
M50 2GL
Tel: +44 161 876 4498
Fax: +44 161 876 4502
Email: syspro@k3scs.com

USA & Americas

SYSPRO Impact Software, Inc.
959 South Coast Drive, Suite 100
Costa Mesa, (Los Angeles region)
California
92626
USA
Tel: +1 (714) 437 1000
Fax: +1 (714) 437 1407
Toll free: (800) 369-8649
Email: info@us.syspro.com

www.syspro.com

Copyright © 2008 SYSPRO. All rights reserved.

All brand and product names are trademarks or registered trademarks of their respective holders. No part of this material may be reproduced or transmitted in any form or by any means, electronic or mechanical, including photocopying, recording, or by any information storage or retrieval system, without prior written permission from the publisher.

Notice of Liability

Every effort has been made to ensure that this book contains accurate and current information. However, SYSPRO and the author shall not be liable for any loss or damage suffered by readers as a result of any information contained herein.